



CATALOGUE





CONTENT

4	WELCOME
5	AMTICO MARINE LVT
20	TEMPORARY PROTECTION
26	INTERIOR FILM
38	CONCRETE ON A ROLL
43	CARPET UNDERLAY
44	CREW & SAFETY FLOORING
60	BASMAT / MATTING
62	TYPE 32 MATTING
63	LOW LEVEL LOOP CARPET TILES
67	MAIA SEATING
70	ADHESIVES
75	MATTRESSES
77	FIREXO FIRE EXTINGUISHERS

WELCOME

Making your vessel more than a mode of transport.

WHO WE ARE

Kerry Johns Ltd is a family owned business, with 60 years of experience in the carpet and flooring industry. For the past 25 years, we have specialised in the supply of IMO certified products for the Marine Industry.

HOW DO WE WORK

Our unique product knowledge and technical support has established us as one of the leading suppliers of marine interior products, and as a result, we have built successful global relationships with major Shipyards, Owners and Contractors.

In conjunction with some of the foremost manufacturing names in the industry, we have put together a collection of quality ranges which have been produced and certified for use on Passenger Vessels.

WHAT WE DO

We will continue to develop and introduce new ranges of quality IMO certified products as they come on stream.

The products and services we offer meet the required industry standards and are supported by the relevant certificates, safety and data sheets.

Worldwide distribution and shipping is handled by the UK's leading Freight Forwarding Services with a reputation for cost-effective efficiency.

All goods are shipped as "SHIP'S SPARES IN TRANSIT" with shipping costs invoiced to our customers at net cost.

We trust you will find our products of interest and we look forward to being of service to you.



Our products are
IMO Certified.



amtico

THE EXCLUSIVE DISTRIBUTOR OF THE AMTICO MARINE COLLECTION

MARINE STANDARD FLOORING

The Amtico Marine collection is a collection of 32 unique Wood, Stone and Abstract designs aimed at vessels who want to create a memorable customer experience through original and bespoke design.

CREATING A UNIQUE EXPERIENCE

Premium designs, inspired laying patterns, and the freedom to create something completely bespoke – use Amtico Marine to shape unforgettable customer experiences, at the highest industry safety standards.

GLOBALLY ACCREDITED. PERFORMANCE ASSURED

Amtico Marine flooring passes the stringent tests for surface flammability and low smoke toxicity required to comply with Modules B & D of the Marine Equipment Directive (MED) and bear the IMO wheelmark. In addition, Amtico Marine now has an extra layer of defence to give you peace of mind between cleanings. We've added our high-performance ionic silver additive to the wear layer, creating a hygienic surface where bacteria cannot multiply or survive.

Incredible performance, made to last. Officially accredited and rigorously tested, this collection is specifically created to deliver optimum performance and safety.

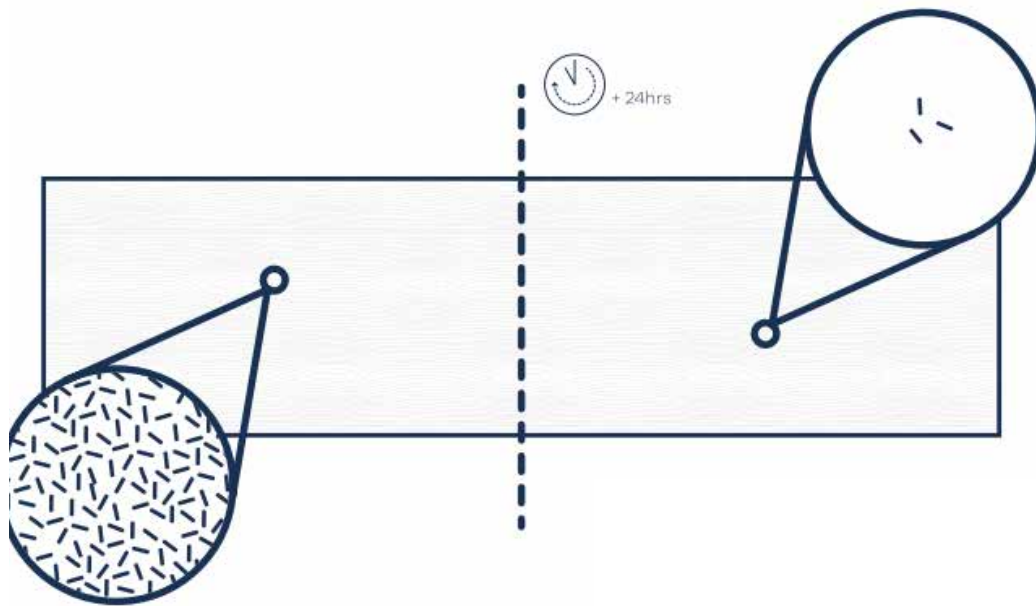


ANTIMICROBIAL

Any offshore locations, from oil rigs to luxury liners, are perfect grounds for bacteria to survive and multiply, due to people carrying out group activities in very close proximity.

We have added a high-performance antimicrobial protection to the Amtico Marine collection. The ionic silver additive provides a hygienic surface where bacteria cannot multiply or survive.

Under independent tests this active ingredient has been proven to reduce bacteria present by > 99.99% over 24 hours. This means Amtico Marine provides an extra layer of defence between cleanings and gives customers increased peace of mind.



Incredible performance, made to last. Officially accredited and rigorously tested, this collection is specifically created to deliver optimum performance and safety.



AMTICO WOOD



Black Walnut

AM5W2534



Coastal Pine

AM5W3029



Dusky Walnut

AM5W2542



Estuary Pine

AM5W3028



Exotic Walnut

AM5W2541



Featured Oak

AM5W2533



Honey Oak

AM5W2504



Manor Oak

AM5W7970



Nordic Oak

AM5W2550



Pale Ash

AM5W2518



Royal Oak

AM5W2530



Sash Oak

AM5W3032



Shibori Lapsang

AM5W7790



Shibori Sencha

AM5W7780



Sun Bleached Oak

AM5W2531



Traditional Oak

AM5W2514



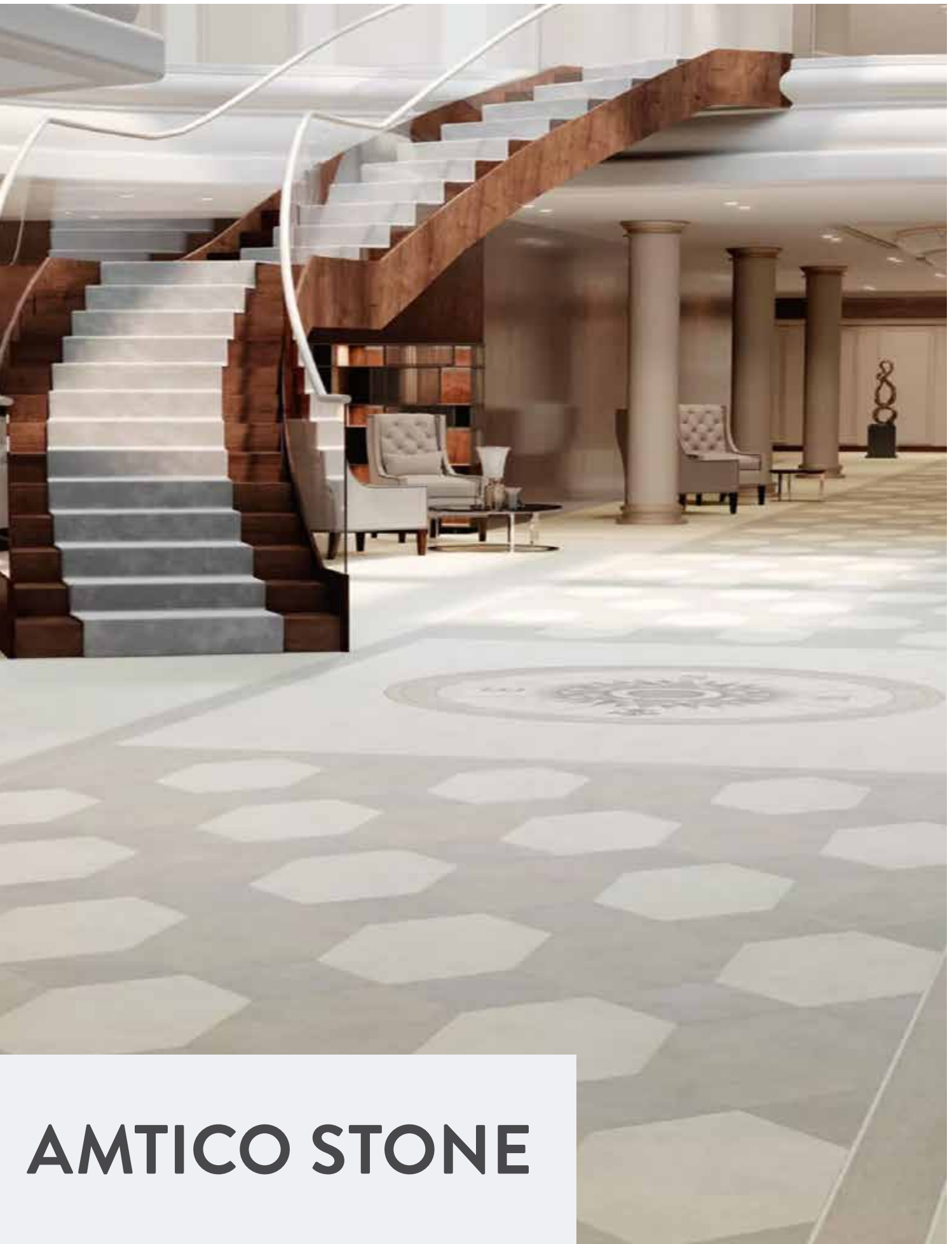
Warm Cherry

AM5W2506



Warm Teak

AM5W2517



AMTICO STONE



Ceramic Coal

AM5S4422



Ceramic Dark

AM5S3566



Ceramic Ecu

AM5S3592



Ceramic Flint

AM5S2594



Ceramic Frost

AM5S1591



Crema Travertine

AM5S1589



Dry Stone Cinder

AM5S4433



Plaza Concrete

AM5S3070

USING PATTERN

Selecting the perfect vinyl flooring or wall design for your space is only part of the design process. Whether you've settled on a wood-look or an abstract design, the LVT pattern you choose is where the real artistry comes to life.

We present a carefully balanced selection of laying patterns each with pre-defined product combinations that effortlessly cover everything from large scale circulation areas to intimate decorative spaces.





AMTICO SPECIAL



Woven MP013

Ceramic Coal & Ceramic Frost



Random Stone MP021

Ceramic Flint & Ceramic Ecu
Stripping



Polygon Key MP020

Plaza Concrete, Ceramic Flint &
Ceramic Coal



Polygon Key MP019

Ceramic Frost, Ceramic Ecu &
Plaza Concrete



Pleat MP017

White Ash, Dusky Walnut, Nordic
Oak, Sash Oak & Sun Bleached
Oak



Pleat MP016

Satin Weave, Ceramic Frost &
Plaza Concrete



Pleat MP015

Estuary Pine



Pleat MP014

Nordic Oak



Small Parquet MP012

White Ash & Nordic Oak



Small Parquet MP010

Black Walnut



Small Parquet MP009

Coastal Pine



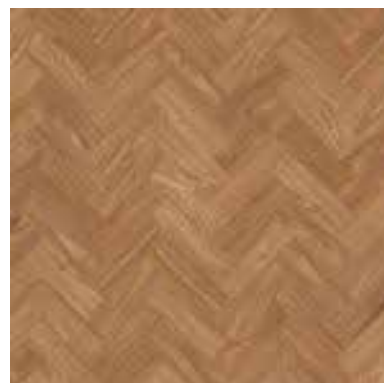
Small Parquet MP006

Warm Teak



Small Parquet MP007

Traditional Oak



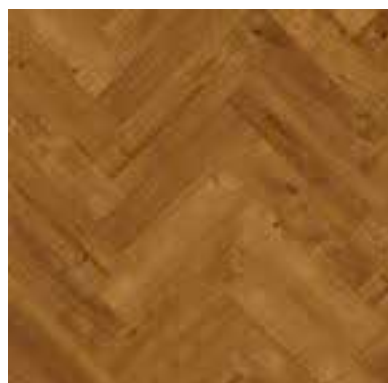
Small Parquet MP008

Honey Oak



Large Parquet MP005

Sun Bleached Oak



Large Parquet MP004

Royal Oak



Key Stone MP026

Nordic Oak



Key Stone MP025

Plaza Concrete & Linen Weave (key)



AMTICO ABSTRACT



Linear Metallic

AM5ALA21



Linen Weave

AM5A3800



Mirus Cotton

AM5A6110



Satin Weave

AM5A3805

60 YEARS OF EXPERTISE

We pride ourselves on expertise and the quality of products we deliver.

We have been operating within the industry for nearly 60 years, using this expertise to supply top quality products to the market.

It's been a great journey so far, and we won't be docking anytime soon!



CONTACT

Marine@KerryJohns.co.uk

TEMPORARY PROTECTION

IMO CERTIFIED

MarineSpec

Temporary Protection

Don't sacrifice the interior of your ship while upgrading.

Our temporary floor protection is fully fire resistant and IMO certified. Easy to install and cost effective, reduce the stress of interior upgrades on your vessel.





TACBAC | All IMO Certified

T100 | 0.6m x 100m

T101 | 1.0m x 100m

T102 | 1.2m x 100m

TacBac FR is a self-adhesive protection used on board passenger vessels to protect all types of carpet.

Florprotec is available in two grades of flame-retardant carpet cover, TacBac fr which is tested to TS63/IMO Certified and TacBac TS63 which is both tested and certified to TS63 (suitable for commercial and domestic projects).

TacBac should not be used on damp or wet carpets or carpet where adhesive has not cured.

Do not use over under-floor heating or in hot humid conditions.

For best results apply TacBac once your carpeted area has been vacuumed.



TBORD M50 FR 2mm is a superbly versatile, impact resistant, corrugated twin wall plastic sheet available in flame retardant and non-flame retardant.

TBORD M50 FR should be applied to smooth finishes that require impact protection. Ideal for both floors and vertical surfaces.

TBORD M50 FR should be used to protect ceramic, timber, marble, vinyl and laminate floors, along with doors, glazing and partitioning walls.

Available in 1.2m x 2.5m x 2mm



Floorliner is an impact resistant cushioned floor cover with anti-slip backing.

Ideal for both smooth and soft floors with a non adhesive slip resistant back.

Floorliner comes in rolls of 1m x 50m.

Floorliner is fully IMO Certified.



MegaFilm

MegaFilm floor protection system is a range of moulded plastic roll designed to suit both carpet and hard floor applications, including wood, vinyl and stone flooring.

MegaFilm offers complete protection during refurbishment and redecoration and is available in a range of grades.

MegaFilm has many highlights such as it is anti-slip, tear and puncture resistant, contains dirt and spillages, covers large areas fast and saves labour time and costs.

Available in 2 sizes 1.5m x 100m & 1m x 100m



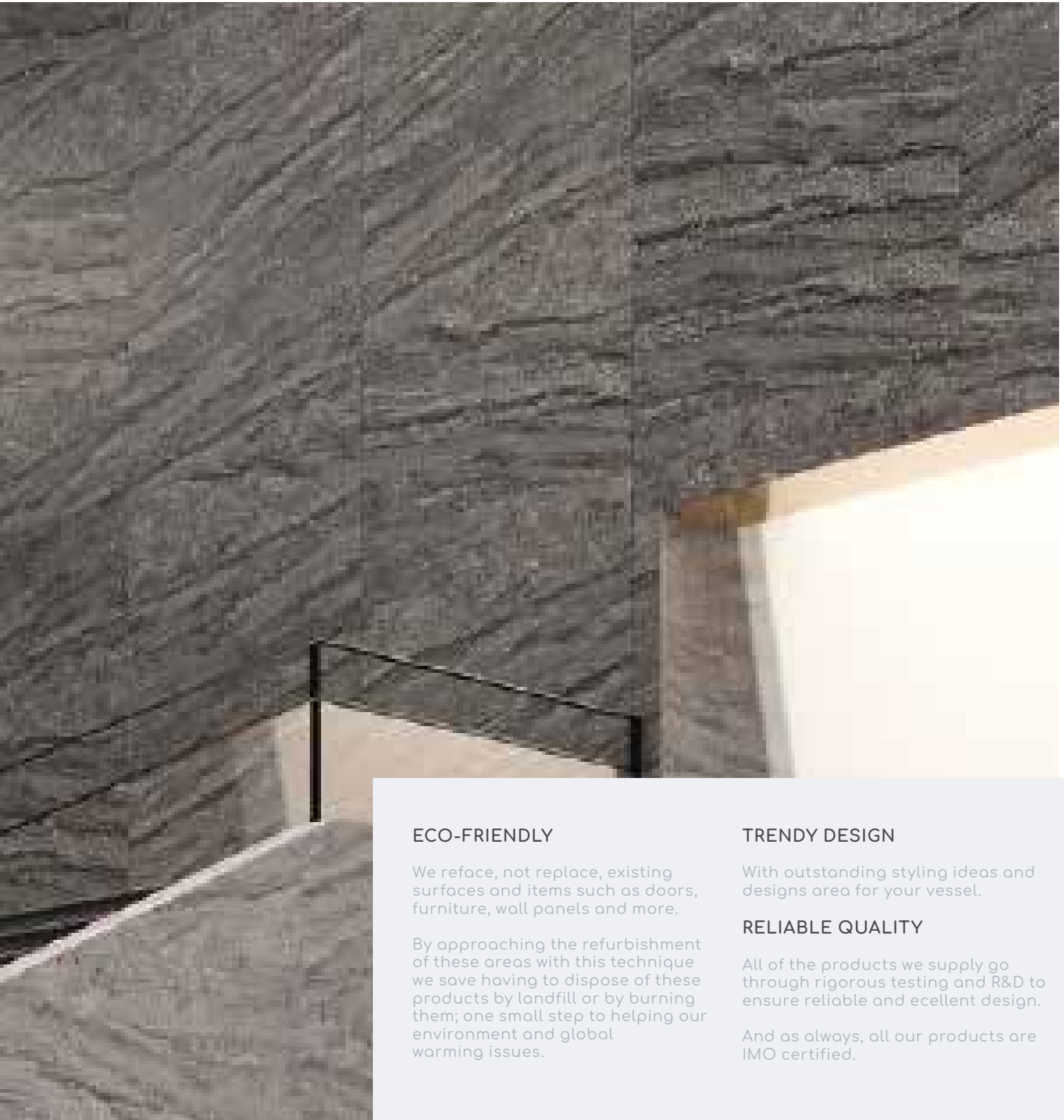
CONTACT
Marine@KerryJohns.co.uk



MarineSpec

IMO certified products

INTERIOR FILM



ECO-FRIENDLY

We reface, not replace, existing surfaces and items such as doors, furniture, wall panels and more.

By approaching the refurbishment of these areas with this technique we save having to dispose of these products by landfill or by burning them; one small step to helping our environment and global warming issues.

TRENDY DESIGN

With outstanding styling ideas and designs area for your vessel.

RELIABLE QUALITY

All of the products we supply go through rigorous testing and R&D to ensure reliable and excellent design.

And as always, all our products are IMO certified.

MARBLE & STONE COLLECTION

IMO CERTIFIED

MarineSpec

Interior Film

PLEASE NOTE

Only UK stock is shown.
More options are available
and please contact
marine@kerryjohns.co.uk
for full details.



BM001



ML67



BM008



BM007



ML56



RM12

CONTACT

Marine@KerryJohns.co.uk



ML57



BM003



BM004



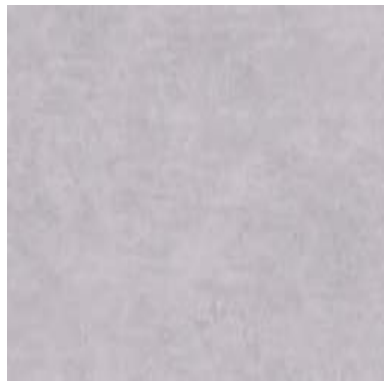
ML92



SM008



BM009



EL177



ML93



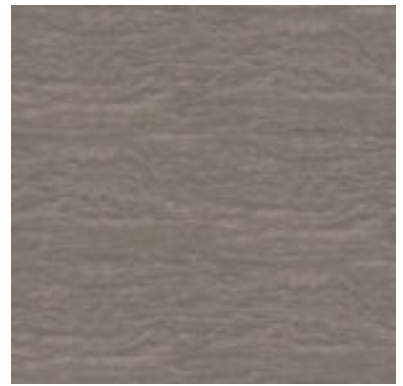
ML94



ML71



ML72



ML58



BM011



ML74



BM012



EL176



ML73



BM006

METAL COLLECTION

IMO CERTIFIED



RP04



RP49



RP50



RP42



RP45



RP47



RP52

METAL COLLECTION

NON CERTIFIED



MS19



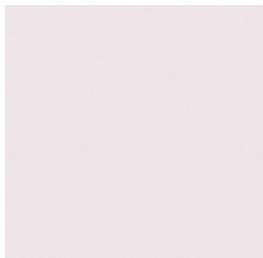
MS18

SOLID COLLECTION

IMO CERTIFIED



RS130



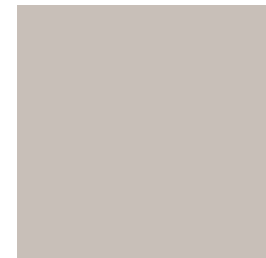
RS86



RS140



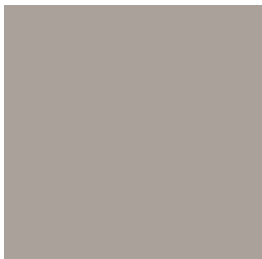
RS35



RS56



RS168



RS55



RS76



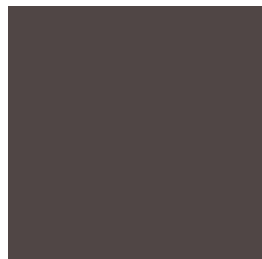
RS91



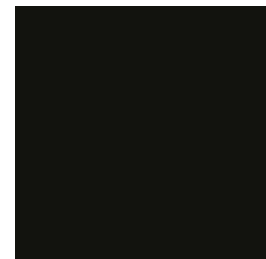
RS121



RS128



RS52



RS22

WOOD COLLECTION

IMO CERTIFIED

ELM



DW636



DW638

TEAK



PW105



CW582



PW135



PW108

OAK



CW556



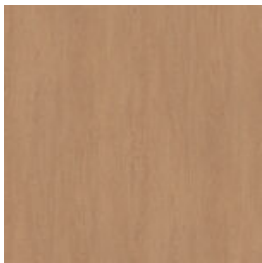
CW604



CW626



PW118



PW102



NW083



BW009



PW131



NW123



PW122



CW624

WALNUT



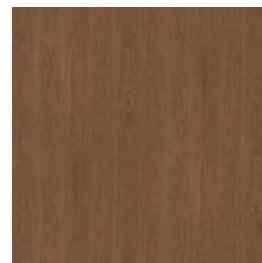
NW101



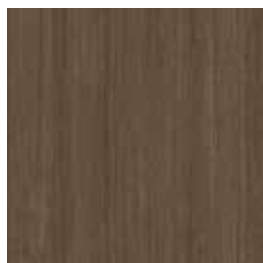
PW124



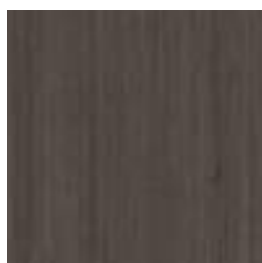
NW060



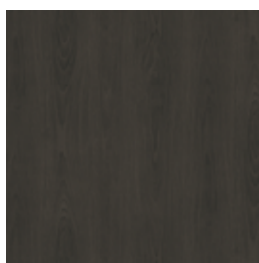
NW046



CW466



DW467



BW022

VARIOUS WOOD



SM001



SM003



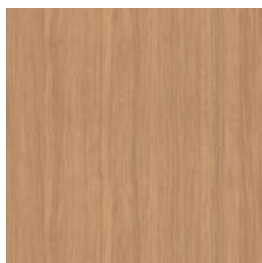
PW112



CW407



CW537



NW006



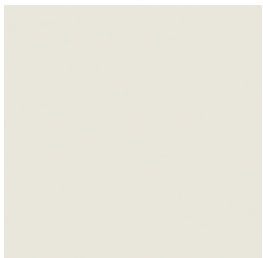
CW356



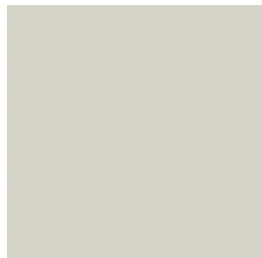
RS175

FABRIC & LEATHER COLLECTION

IMO CERTIFIED



ML83



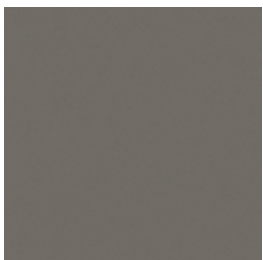
DP001



ML84



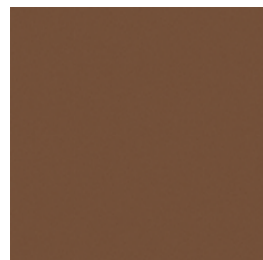
NV002



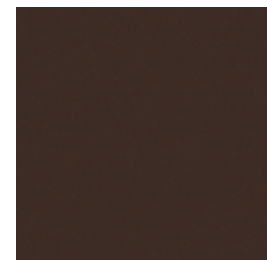
ML85



ML88



ML86



ML87

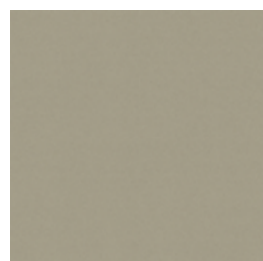
NON CERTIFIED



SF011



SF012



SF016

CONTACT

Marine@KerryJohns.co.uk

CONCRETE ON A ROLL COLLECTION

World Leading Natural Thin Stone Veneers

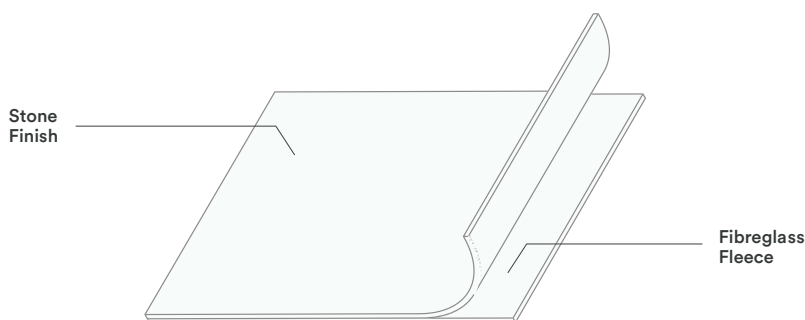
Earth Anatomy believes that architects and designers need to have an opportunity to explore the potential of natural materials. With our natural, thin, veneer surfaces we offer the design community a disruptive product, process and fabrication technology that unlocks the power of their ideas.

New Possibilities

By making stone thin an entirely new range of possibilities and applications are opened up for designers, architects, and engineers both working in product development, construction, transportation, and retail industries worldwide.

New Generation

Earth Anatomy Veneers are a new generation of surfacing materials. Thin, light and flexible, our veneers can transform ordinary surfaces with the look and touch of stone without the difficulty and expense of solid stone.



CONCRETE



Charcoal
Cement 043



Cool
Cement 008



French
Cement 005



Taupe
Cement 080



Lime
Cement 035

TRAVERTINE



Travertine
005



Travertine
Grey 084



Travertine
White 082

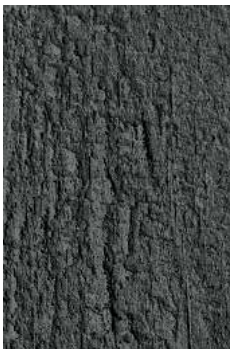


Travertine
Black 083



Travertine
Sandstone 083

WOOD/SHUTTERED



Fire
Plank 093



Deep
Texture 120



French
Grey 092



Rustic
Grey 007

RIVEN STONE



Riven Stone
Black 094



Riven Stone
Grey 098



Riven Stone
White 099

RUST



Rust Smooth
Light 021



Rust
Textured 022



Rust Waffle
Dark 002





On A Roll

On A Roll is manufactured from 95% quarry waste stone material and is bound together with natural binders to create a unique flexible stone finish with a variety of uses. A British manmade material, this versatile product gives architects and designers the ability to interpret concrete in a whole new light whilst the easy installation opens up many DIY projects and home decoration. On a roll enables you to have the beauty of real stone with all the benefits of a lightweight veneer. Each flexible concrete sheet is 2mm thick making it perfect for eye catching indoor and outdoor applications. It is the perfect product for furniture (bendable to 90 degrees), feature walls, kitchens, bathrooms and more. Worldwide patent applied for.

Part Of A Bigger Range

This stone veneer range is part of an exciting and innovative product mix created by Earth Anatomy. With over 50 years of manufacturing experience for both commercial and domestic sectors, the range of Natural Stone, and concrete veneers offer a choice of colours and textures second to none. All our veneers are tried and tested for both interior and exterior applications. Samples of all textures and colours are available on request.

CONTACT

Marine@KerryJohns.co.uk

SAVING OVER 500 TONNES OF LANDFILL WASTE

Through the process of “shearing” we save copious amounts of waste from of our carpets and carpet tiles.

These actions have reduced our waste to landfill from over 600 tons per annum (some 15 years ago), to approximately 60 tons per annum.



CONTACT
Marine@KerryJohns.co.uk

CARPET UNDERLAY

IMO CERTIFIED

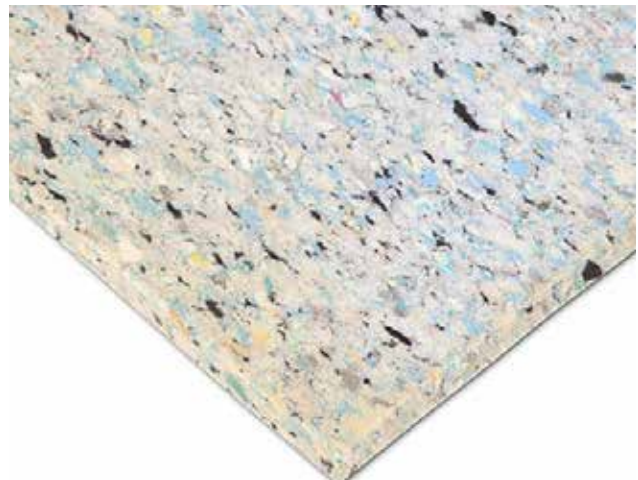
MarineSpec

6mm Carpet Underlay

Guaranteed for the life of the carpet.

Underlay improves floor insulation to keep the room at a reasonable temperature, reducing heating and cooling costs.

Quality underfloor insulation is also important for extending the life of any upper layers, especially in areas with heavy footfall.



SPECIFICATIONS

Classification | IMO Certified

Roll Length | 137cm+/-1%

Roll Size | 15.07m²

Density | 145kg/m³ +/-5%

Roll Weight | 17kg +/-5%

Thickness | 6mm +/-5%

High Flame Retardency Properties

Thermal Resistance | 1.77 tog



CONTACT

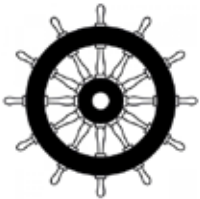
Marine@KerryJohns.co.uk

CREW VINYL FLOORING

IMO CERTIFIED

Vinyl flooring with anti-slip grip to provide a high level of protection for your crew.

A collection of high performance, low maintenance heavy duty vinyls, available in a range of colours.



All Vinyl flooring products are IMO Certified.



13-2000 COLLECTION

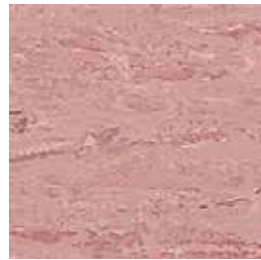
IMO CERTIFIED



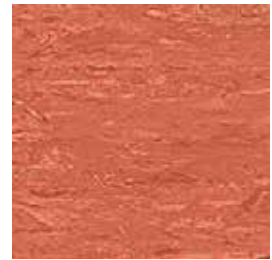
13-2026



13-2027



13-2028



13-2029



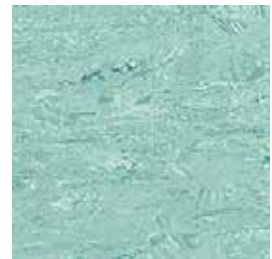
13-2030



13-2031



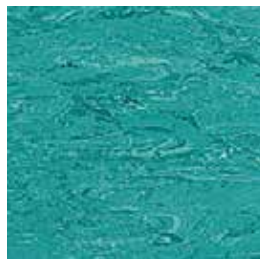
13-2032



13-2033



13-2034



13-2035



13-2036



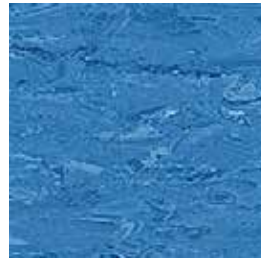
13-2037



13-2038



13-2039



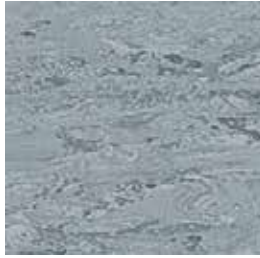
13-2040



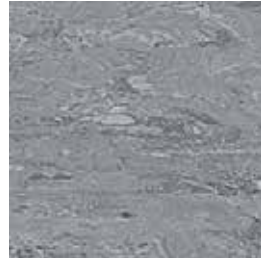
13-2041



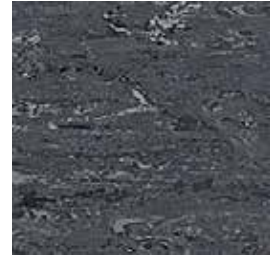
13-2042



13-2043



13-2044



13-2045

SPECIFICATIONS

Classification | IMO Certified

Product | Flexible PVC sheet flooring

Slip resistance rating | R9

Thickness | 2.0mm

Roll size | 20m x 2m = 40m²

Weight | 3550g/m²



13-2100 COLLECTION

IMO CERTIFIED



13-2146



13-2147



13-2148



13-2149



13-2150



13-2151



13-2152



13-2153



13-2154



13-2155



13-2156



13-2163



13-2157



13-2158



13-2159



13-2160



13-2161



13-2162



13-2164



13-2165



13-2166



13-2168



13-2167



13-2169

SPECIFICATIONS

Classification | IMO Certified

Product | Flexible PVC sheet flooring

Slip resistance rating | R9

Thickness | 2.0mm

Roll size | 20m x 2m = 40m²

Weight | 3200g/m²

13-2200 COLLECTION

IMO CERTIFIED



13-2270



13-2280



13-2271



13-2272



13-2273



13-2274



13-2275



13-2276



13-2277



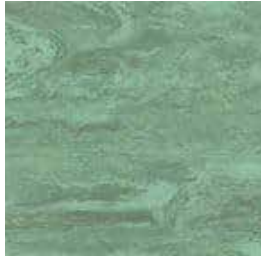
13-2278



13-2279



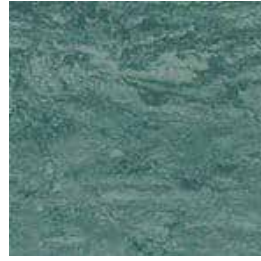
13-2281



13-2282



13-2285



13-2283



13-2284

SPECIFICATIONS

Classification | IMO Certified

Product | Flexible PVC sheet flooring

Slip resistance rating | R9

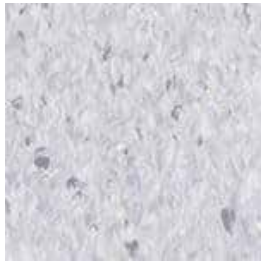
Thickness | 2.0mm

Roll size | 20m x 2m = 40m²

Weight | 3200g/m²

33-1100 COLLECTION

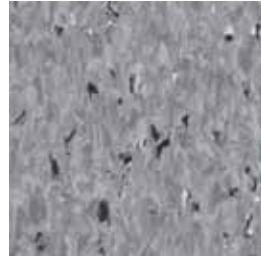
IMO CERTIFIED



33-1123



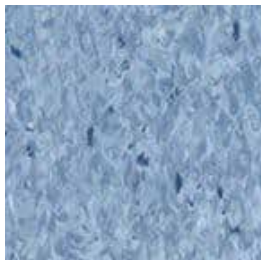
33-1124



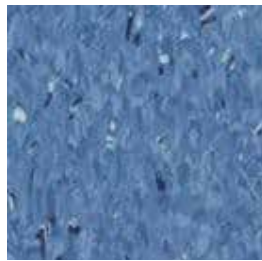
33-1125



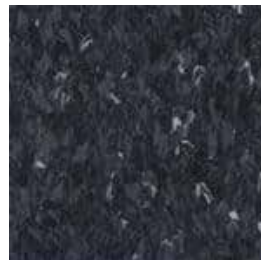
33-1126



33-1127



33-1128



33-1129



33-1130



33-1131

SPECIFICATIONS

Classification | IMO Certified

Product | Homogeneous single layered vinyl flooring

Slip resistance rating | R9

Thickness | 2.0mm

Roll size | 20m x 2m = 40m²

Tile size | 610mm x 610mm

CONTACT

Marine@KerryJohns.co.uk

33-1200 COLLECTION

IMO CERTIFIED



33-1243



33-1242



33-1241



33-1132



33-1233



33-1234



33-1235



33-1236



33-1237



33-1238

SPECIFICATIONS

Classification | IMO Certified

Product | Homogeneous single layered vinyl flooring

Slip resistance rating | R9

Thickness | 2.0mm

Roll size | 23m x 2m = 40m²

Weight | 3150g/m²

33-1300 COLLECTION

IMO CERTIFIED



33-1344



33-1345



33-1346



33-1247



33-1348



33-1349



33-1350



33-1351



33-1352



33-1353



33-1354



1355



33-1357



33-1356



33-1358



33-1359



33-1360



33-1362

SPECIFICATIONS

Classification | IMO Certified

Product | Homogeneous vinyl flooring

Slip resistance rating | R9

Thickness | 2.0mm

Roll size | 20m x 2m = 40m²

Tile size | 610mm x 610mm & 300mm x 300mm

33-1400 COLLECTION

IMO CERTIFIED



33-1462



33-1463



33-1464



33-1465



33-1466



33-1467



33-1468



33-1469



33-1470



33-1471



33-1472



33-1473



33-1473



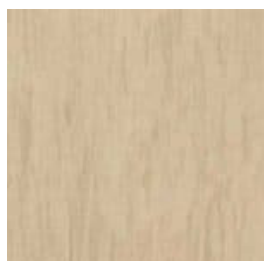
33-1475



33-1476



33-1477



33-1478



33-1480



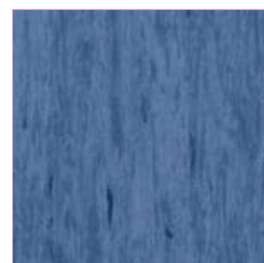
33-1481



33-1482



33-1483



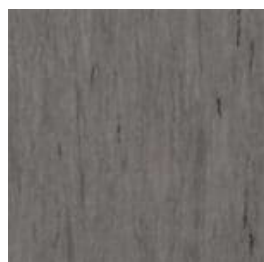
33-1484



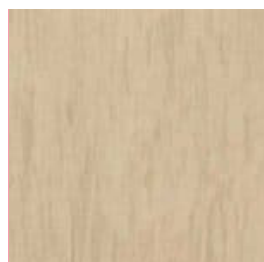
33-1485



33-1477



33-1487



33-1478



33-1488



33-1489



33-1490



33-1491

SPECIFICATIONS

Classification | IMO Certified

Product | Homogeneous single layered vinyl flooring

Slip resistance rating | R9

Thickness | 2.0mm

Roll size | 20m x 2m = 40m²

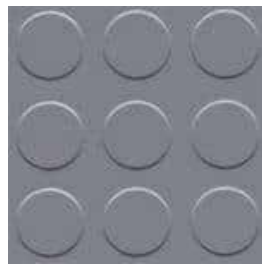
Tile size | 610mm x 610mm & 500mm & 500mm

13-2400 COLLECTION

IMO CERTIFIED



13-2490



13-2491



13-2492



13-2493

Synthetic rubber floor tiles with a low profile studded surface. Suitable for all heavy duty marine installations.

SPECIFICATIONS

Classification | IMO Certified

Product | High-grade synthetic rubber

Slip resistance rating | EN 13893 DS

Tile Size | 2.500 x 500mm

Carton size | 20 x (500 x 500mm) = 5m²

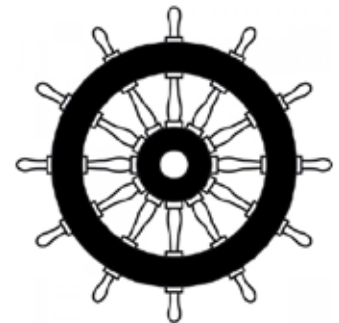
Weight | 4800G/m²

CONTACT

Marine@KerryJohns.co.uk



A ship in a port is safe.
But that's not what ships are built for.



Quality and
Expertise.

CONTACT
Marine@KerryJohns.co.uk

BASMAT CLICK SYSTEM MATTING

IMO CERTIFIED

Protect your vessel from dirt and debris.

This is a unique 'click system' entrance matting. The click system is manufactured out of aluminium and has IMO Certified carpet (Matting) Inserts.



CONTACT
Marine@KerryJohns.co.uk



Apolo Textile

22mm



Artemis Textile

9mm



Atenea Textile

9mm



Cronos Textile

17mm



Hermes Textile

17mm

SPECIFICATIONS

IMO Certified Inserts

Unique click system

Nylon Brushes in the pile of the IMO Certified Matting Inserts, to trap any dirt from your shoes

Easy to install

Different gauges

7.3kg Aluminium Per m2

Heavy Traffic Resistant

CONTACT

Marine@KerryJohns.co.uk

TYPE 32 ENTRANCE MATTING

IMO CERTIFIED



Graphite

42-1012



Brown

42-1010



Charcoal

42-1016



French Blue

42-1011

SPECIFICATIONS

Construction

1/8th gauge Tufted

Pile

60% wool / 40% Nylon

Number of tufts

Approx 104,106m2

Pile Thickness

Approx 6mm

Backing

EUA Latex FR 2369

Total Weight

2595g/m2

Total Thickness

Approx 7mm

Wear Classification

33

Roll length

approx 25m

Roll Width

210cm wide

IMO Certification

Modules B & D

CARPET & CARPET TILES

IMO CERTIFIED NAVAL LOW LEVEL LOOP

Carpet tiles are a practical and hardwearing flooring solution suitable for marine environments.

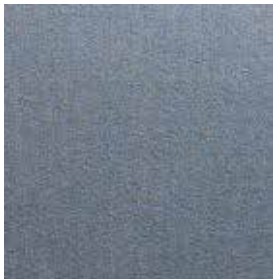
Their modular design produces less waste during installation, and fitting floor carpet tiles is simple, fast and effective.



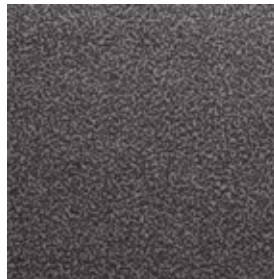
Red
34-1513



Blue
34-1510



Grey
34-1512



Black
34-1511

SPECIFICATIONS

Classification | IMO Certified

Structure | ISO 2424 | Tufted Loop Pile

Gauge | ISO 2424 | 1/10

Material | DIR 96/73, 96/74 | Rengenerated Econyl PA6

Dimensions | ISO 3018 | 48 x 48cm / 96 x 96cm Tiles

Carpet Weight | ISO 8543 | 1500g/m²

Backing Weight | 350g/m²

Total Product Weight | 1850g/m²

Backing Thickness | 2.6mm

Total Product Thickness | 6.5mm

Static Control | ETL | Permanently Antistatic

Minimum Order Quantity | 200m²

CONTACT

Marine@KerryJohns.co.uk

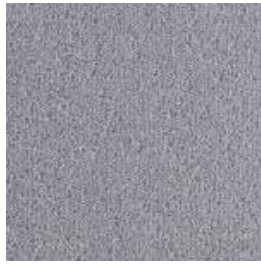
MARINESPEC CARPET

IMO CERTIFIED

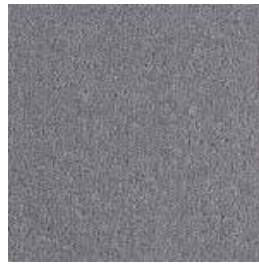
80/20 Twist



39-1510



39-1511



39-1513



39-1528



39-1528



39-1532

SPECIFICATIONS

Classification | IMO Certified

Construction | Tufted Cut Pile

Width | 4.00m & 5.00m

Pile Yarn | 80% Wool 20% Man Made Fibre

Total Pile Weight | 2409/m², 81oz/yd²

Pile Height | 7.00m

Backing | Secondary

CONTACT

Marine@KerryJohns.co.uk

MARINESPEC CARPET

IMO CERTIFIED

Herringbone



39-1410



39-1411



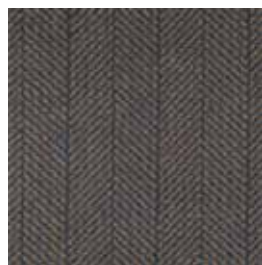
39-1414



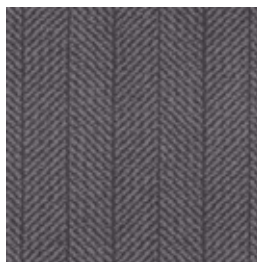
39-1415



39-1416



39-1417



39-1418



39-1419

SPECIFICATIONS

Classification | IMO Certified

Construction | Graphics tufted

Width | 4.00m

Pile Yarn | 80% Wool 20% Nylon

Total Pile Weight | 2373/m², 70oz/yd²

Pile Height | 6.50m / 0/25"

Backing | Secondary

CONTACT

Marine@KerryJohns.co.uk

MARINESPEC CARPET

IMO CERTIFIED

Movement



39-1315



39-1316



39-1317



39-1318



39-1319



39-1320



39-1321



39-1322

SPECIFICATIONS

Classification | IMO Certified

Construction | Graphics tufted

Width | 4.00m

Pile Yarn | 80% Wool 20% Nylon

Total Pile Weight | 2373/m2, 70oz/yd2

Pile Height | 6.50m / 0/25"

Backing | Secondary

CONTACT

Marine@KerryJohns.co.uk

MAIA SEATING

IMO CERTIFIED

Ideal for the ultimate comfort onboard

Designed and manufactured by the current leaders of the international market for quality, design and technology innovation, our MAIA seats are ideal for cinemas, theatres and auditoriums onboard any marine vessel.

Comfortable, durable and highly resistant, our MAIA seats are available in a range of colours to suit your marine interior. Whether you need seating with arm rests, cupholders or writing tables, our MAIA seats come with a range of accessories and options, to ensure the perfect seating solution for your vessel and passengers.





Unique chairs with quality, design, functionality and innovative character

MAIA seats are a multifunctional model, which offers many options. The careful design and comfortable dimensions, make it an armchair that is adaptable to multiple spaces. and they can be made in a range of fabrics and a variety of colours.

Certified quality – our seats are manufactured according to the highest quality standards ISO 9001, 14001 and 14006.

SPECIFICATIONS

Dimensions:

50 to 52/54 to 55 cm width between centers
40 cm long
86.5 cm high

Chair Back:

UNIBLOCK 2® upholstery system made of cold-moulded polyurethane foam that completely envelops a polypropylene injection frame, all of which is protected with a texturised polypropylene injection shell.

Polyurethane density 55 Kg/m³.

Chair Seat:

UNIBLOCK 2® upholstery system made of cold-moulded polyurethane foam that completely envelops a polypropylene injection frame, all of which is protected with a texturised polypropylene injection shell.

The folding of the seat occurs automatically and silently by means of a double spring and does not require maintenance.

Polyurethane density 65 Kg/m³.

Chair Side Stand:

Textured polypropylene injection.
Hidden fixing system to the floor.

Arm:

Included in the side

Volume:

0.08 m³ per unit

Weight:

10 Kg disassembled



FLOOR ADHESIVES

IMO CERTIFIED

Floor adhesives are essential to any onboard flooring project.



CONTACT

Marine@KerryJohns.co.uk



Styccobond F3 Multi Purpose Carpet Adhesive

Water based rubber/resin flooring adhesive that has excellent wet grab with an early build up of strength, used for securing woven carpets, hessian, felt, secondary latex and rubber foam backed carpets and cork tiles up to 3.2mm thick.

SPECIFICATIONS

Coverage Rate – (Approx.) 3m² per litre using a 2mm x 6mm trowel.

Storage and Shelf Life -Store between 5°C and 30°C. Protect from frost.

Shelf life 12 months in unopened containers stored under good conditions

IMO Certified



Styccobond F40 Surface Tackifier

Synthetic polymer emulsion designed to provide a dual bond system.

A solvent free, water based adhesive which dries to form a transparent, permanently tacky coating and is suitable for the installation of marine certified underlays.

SPECIFICATIONS

Coverage Rate | (Approx.) 4m² – 7m² per litre with a 1.5mm x 5mm trowel 7m² – 9m² with a roller

Drying Time | (Approx.) 40 minutes depending on temperature, humidity and absorbency of the subfloor

Storage and Shelf Life | Store between 5°C and 30°C. Protect from frost.

Shelf life 12 months in unopened containers stored under good conditions

IMO Certified

CONTACT

Marine@KerryJohns.co.uk



Styccobond F41 Carpet Tile Tackifier

A solvent free emulsion adhesive designed to provide a permanently tacky film to prevent loose lay carpet tiles from moving. It allows the tile to be lifted and replaced easily without remedial work. Non-flammable and resistant to plasticiser migration.

The tackifier has an added rust inhibitor element, which prevents the product from causing oxidation when used on raised access flooring or other metallic subfloors.

The tackifier is protected against biodegradation and is suitable for use over underfloor heating installations.

SPECIFICATIONS

Coverage Rate | 7 – 20m² per litre with a roller depending on the absorbency of the subfloor and the backing of the carpet tile

Drying Time | (Approx.) 30 minutes depending on temperature, humidity and absorbency of the subfloor

Storage and Shelf Life | Store between 5°C and 30°C. Protect from frost.

Shelf life 12 months in unopened containers stored under good conditions

IMO Certified



Styccobond F44 Acrylic Vinyl Floor Adhesive

A solvent free acrylic emulsion adhesive which is designed to give a high bond strength, strong initial tack and a long open time.

SPECIFICATIONS

Coverage Rate | (Approx.) 4m² per litre using a 1.5mm x 5mm trowel

Storage and Shelf Life | Store between 5°C and 30°C. Protect from frost.

Shelf life 12 months in unopened containers stored under good conditions

IMO Certified



Styccobond F46 Pressure Sensitive Acrylic Flooring Adhesive

Solvent free adhesive that dries to a permanent tack. To minimise the effect of adhesive shadowing through thin vinyl/PVC floorcoverings, the adhesive can be trowel applied and flattened with a paint roller. Indefinite open time.

SPECIFICATIONS

Coverage Rate | (Approx.) 3m² per litre with a 1.5mm x 3mm or A2 4m² per litre with a Styccobond Fine Notch (A1)

5m² per litre with 1.5mm x 5mm trowel

Drying Time | (Approx.) 40 minutes depending on temperature, humidity and absorbency of the subfloor.

Storage and Shelf Life | Store between 5°C and 30°C. Protect from frost.

Shelf life 12 months in unopened containers stored under good conditions

IMO Certified



UZIN Universal Tackifier

A water soluble dispersion fixative for PVC and textile coverings. Recommended for use on Flotex Squares.

SPECIFICATIONS

Packaging | plastic bucket

Pack sizes | 12 kg

Shelf life | min. 12 months

Colour | cream white

Working temperature | min. 15°C at ground level

Consumption /coverage | up to 120m² per 12 kg bucket

Open time | 10 – 80 minutes* (until tacky, transparent)

Working time | 20 – 60 minutes* see "Application"

Set to traffic | after 24 – 48 hours*

Final strength | after 2 – 5 days*

IMO Certified



Styccobond F58 Rubber Flooring Adhesive

Acrylic emulsion adhesive designed to give a high bond strength and high initial tack.

Suitable for installation over normal underfloor heating installations.

SPECIFICATIONS

Coverage Rate | (Approx.) 3m² per litre with an A2 trowel

Open Time | Up to 30 minutes depending on the temperature of the subfloor

Storage and Shelf Life | Store between 5°C and 30°C. Protect from frost.

Shelf life 12 months in unopened containers stored under good conditions

IMO Certified



Styccobond F81 2 Part Epoxy Flooring Adhesive

A solvent free, two part epoxy adhesive. When cured it is resistant to water, oil and grease. Suitable for installation of synthetic turf to open decks. When fully cured, the water resistance makes it ideal for indoor and outdoor installations subjected to surface water.

SPECIFICATIONS

Coverage Rate | (Approx.) 2m² per kg using a 1.5mm x 5mm or A2 trowel 1.2m² per kg using a 2mm x 6mm or B2 trowel

Pot Life | Up to 60 minutes depending on the temperature of the subfloor
Working Time - (Approx.) 2 hours at 20°C

Cure Time | At 18°C will allow foot traffic in 24 hours, light wheeled traffic in 3 days and normal use after 7 days

Storage and Shelf Life | Store between 5°C and 30°C. Protect from frost.

Shelf life 12 months in unopened containers stored under good conditions

IMO Certified

CONTACT

Marine@KerryJohns.co.uk

MATTRESSES

IMO CERTIFIED



All our Mattresses
are IMO Certified.



Comfort onboard.

The Wheelmark Elite is a pocket sprung mattress available in 16cm or 22cm depths.

- Available as Single or Double mattresses
- Custom Sizes available
- Tufted F.R. 100% cotton ticking
- IMO certified

Responsibly manufactured to go beyond basic social and environmental regulations and to meet the highest standards in our supply chain expected by our customers and the companies we work with. Certified and regularly audited by the National Bed Federation (NBF) and meet ISO 9001 and ISO 14001 standards. The NBF expects and requires social responsibility, flammability testing, cleanliness of fillings, trade Descriptions, Chemicals - REACH, BIOCIDES, POP's, UKTR and textile fibre content regulations compliance.

Mattress fillings:

Materials	Environmental Benefits
Topaz	Made using recycled clothes and rags, ensuring circular economy benefits and avoiding landfill
Rebound	Contains recycled polyester from plastic bottles (based on a 90cm x 190cm single mattress, 64 bottles avoid landfill & ensure circular economy benefits)
Ultrafirm Polyester	A foam replacement product. Contains recycled polyester from plastic bottles



Pocket Sprung 800 Count
Tension Tufted Mattresses

SPECIFICATIONS

Available as Single or Double
mattresses

Custom Sizes available

Tufted F.R 100% cotton ticking

Mattress depth | 18cm & 23cm

IMO Certified



White Foam
Mattresses

SPECIFICATIONS

Available as Single or Double
mattresses

Custom Sizes available

Taped Edged in 100% Black &
White

Stripe cotton Fabric

IMO Certified

Any Mattress depth available

Waterproof option available

MARINESPEC FIREXO

FIRE EXTINGUISHERS



Keeping you safe at sea.

Launched in the UK in November 2018, Firexo offers a groundbreaking fire safety solution suitable for all fire classes.

Their extinguishers, awarded the BSI Kitemark in 2023, have gained popularity in the industry due to their simplicity, effectiveness, and eco-friendliness.








Firexo's partnership with Kerry Johns Ltd aims to provide unmatched fire protection throughout the marine industry.

Sustainable and eco-friendly.

A big focus for the Kerry Johns team is to provide marine safe products that are also environmentally responsible.

MarineSpec Firexo is a fire extinguisher with a difference. Unlike other fire extinguishers, MarineSpec Firexo is made of natural ingredients, safe and non-toxic, is PH neutral, biodegradable and environmentally friendly, plus it is also refillable - saving time and money whilst supporting the environment.



TYPE of FIRE TYPE of EXTINGUISHER	 A COMBUSTIBLE MATERIALS e.g. Paper, Home furnishings	 B FLAMMABLE LIQUIDS e.g. Petrol, Paints, Diesel	 C FLAMMABLE GASES e.g. Methane, Butane	 D FLAMMABLE METALS e.g. Aluminium, Magnesium	 E ELECTRICAL EQUIPMENT e.g. TVs, Heaters, Kitchen Gadgets	 F COOKING OILS, FATS e.g. Chip Pans, Fry Pans	 F+L LITHIUM-ION BATTERIES e.g. Phones, Tablets, Laptops
firexo	✓	✓	✓	✓	✓	✓	✓
WATER	✓	✗	✗	✗	✗	✗	✗
FOAM	✓	✓	✗	✗	✗	✗	✗
DRY POWDER	✓	✓	✓	✗	✓	✗	✗
CO₂ CARBON DIOXIDE	✗	✓	✗	✗	✓	✗	✗
WET CHEMICAL	✓	✗	✗	✗	✗	✓	✗
WATER MIST	✓	✗	✗	✗	✓	✗	✗



IMO Certified

6 Litre EXTINGUISHER

The Firexo 6 Litre is a light-commercial option built for large fires and provides easier movement by being only 25 lbs.

- Wall mounting bracket included
- Tested on Li-ion Batteries in Sweden
- Suitable for Class A & D fires
- Fully serviceable to BS 5306-3

SPECIFICATIONS

Model/ Product number: 809-765-347-876
 Capacity: 6L
 Overall product height: 520mm
 Cylinder height: 430mm
 Cylinder diameter: 162mm
 Cylinder material: Steel
 Pressurising gas: Nitrogen
 Test pressure: 30 BAR
 Working pressure: 12 BAR
 Weight (full): 10.67kg
 Weight (empty): 3.65kg
 Spray range: 1-4m
 Discharge time: 25-35 seconds
 Temperature range: -15°C / +60°C
 Warranty: 5 years



500 ml Aerosol

The Firexo 500ml Aerosol is compact, lightweight, and EN3 fire-rated. It includes a transport-approved bracket and has a pressure gauge for readiness.

- Transport-approved bracket
- Suitable for all types of fire
- Single use
- No maintenance

SPECIFICATIONS

Model/ Product number: 809-765-347-816
 Capacity: 0.5L
 Overall product height: 290mm
 Cylinder height: 265mm
 Cylinder diameter: 63mm
 Cylinder material: Stainless Steel
 Pressurising gas: Nitrogen
 Test pressure: 27 BAR
 Working pressure: 12 BAR
 Weight (full): 1.1g
 Spray range: 1-3m
 Discharge time: 10-12 seconds
 Temperature range: -15°C / +60°C
 Warranty: 3 years



150 ml Mini Aerosol

This 150ml mini aerosol is ideal for quick and lightweight firefighting.

- Suitable for all types of fire
- Single use
- No maintenance

SPECIFICATIONS

Model/ Product number: 5060638821205
 Capacity: 0.15L
 Overall product height: 1700mm
 Cylinder height: 142mm
 Cylinder diameter: 53mm
 Cylinder material: Aluminium
 Pressurising gas: Nitrogen
 Weight (full): 220g
 Spray range: 1-3m
 Discharge time: 10-12 seconds



Pan Fire Sachet

Extinguishing up to 3 litres of fat using 120ml of bespoke extinguishing medium. Designed for class F fires and ideal for kitchens. The sachet is disposable after use, with an easy clean up.

- Includes a hanging strip
- Suitable for class F fires
- Single use
- Compatible with Firexo Aerosol products for kitchen use

SPECIFICATIONS

Model/ Product number: 809-765-347-786

Capacity: 0.12L

Sachet length: 330mm

Sachet width: 70mm

Weight of sachet: 0.2kg

Temperature range: 0°C / +60°C

Warranty: 1 years

